



Partnership Group
Presentation

University College Cork

18 Feb 2004



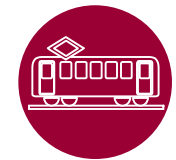
ARUP

Presentation Structure

Section 1
Context & Background

Section 2
Proposed Measures

Section 3
Scenarios being Considered



ARUP

Section 1

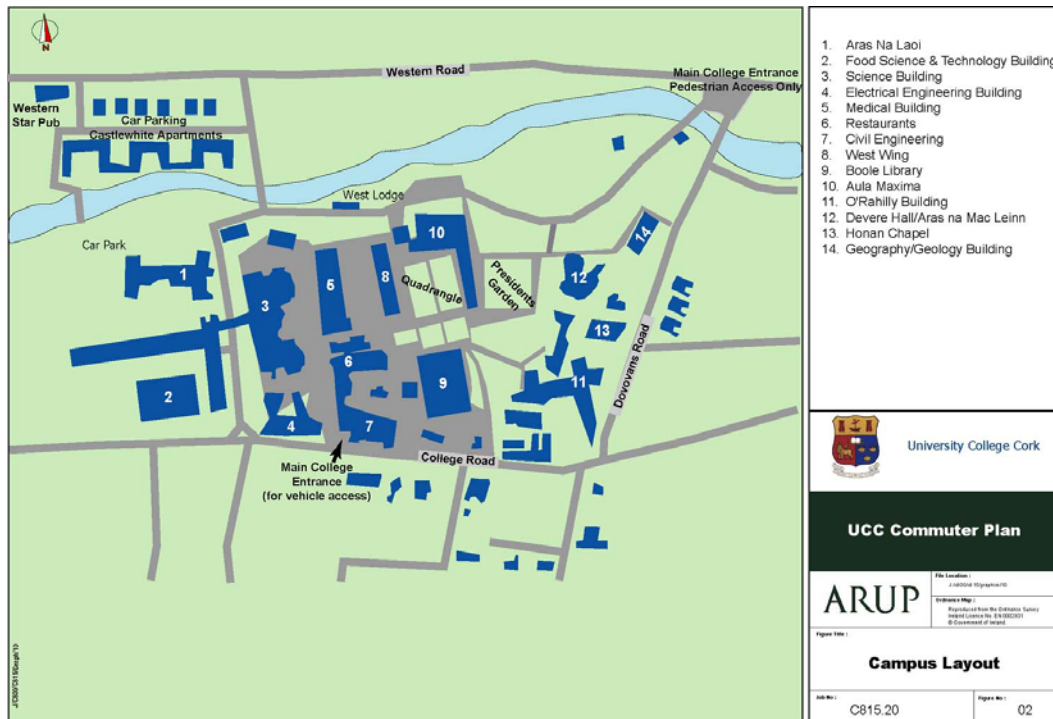
Context & Background



ARUP

Section 1 Context & Background

Introduction



Main issues facing UCC:

- Growing campus and student numbers
- Increase demand for car parking spaces with increased staff and student car ownership levels
- Need for sustainable development
- Minimise the impact on surrounding areas

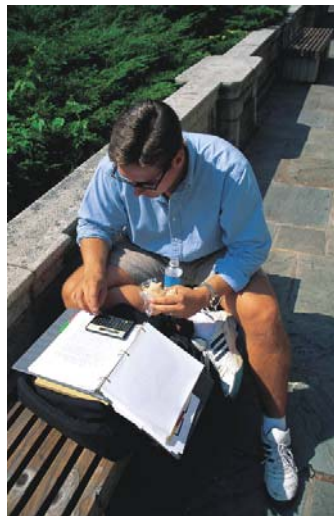
Section 1 Context & Background

Commuter Plan Aims

Improve accessibility by alternative modes.



Improve the environment around UCC.



Control & manage parking demand.



ARUP

Section 1 Context & Background

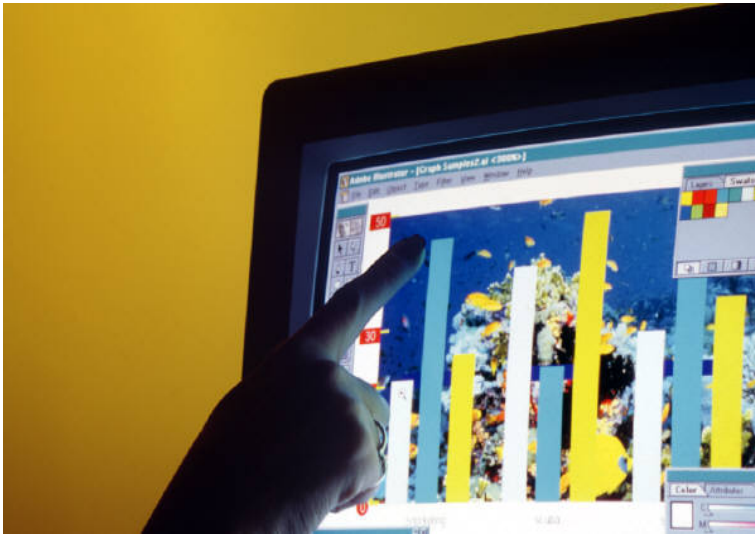
Methodology



- Establish **current travel patterns**.
- Identify the **main issues affecting commuters**.
- Consult with the various interested parties about **possible solutions**.
- Put together a **package of measures** for UCC.
- Establish a **steering group** to oversee the plan.
- Employ a **Commuter Plan Manager** to implement the day to day workings of the plan.
- **Establish targets** for the plan so that it's success can be monitored.

Section 1 Context & Background

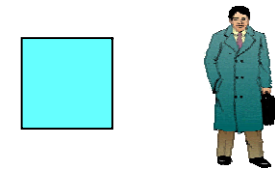
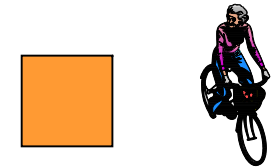
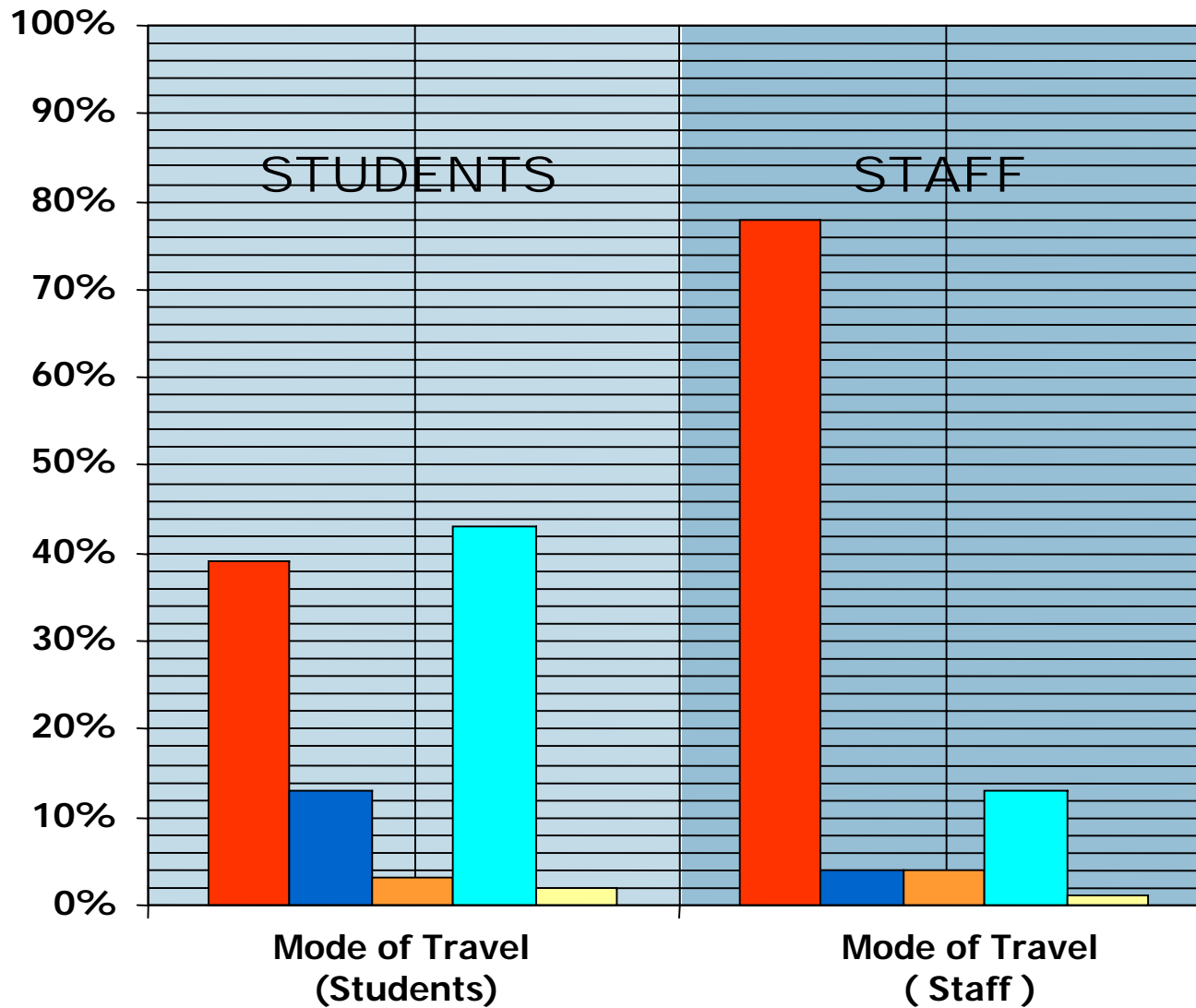
Survey Findings



- Existing travel patterns
 - Willingness to change
 - Possible alternatives
 - Summary of findings from the survey
-

Section 1 Context & Background

Existing travel patterns



Section 1 Context & Background

Willingness to change

24%

of staff drivers said they would participate in a **car-sharing** scheme if there was reserved parking for sharers

56%

of staff drivers said that they would use a **park and ride** service if a more convenient site is provided

38%

of staff drivers said that a more **frequent service** would encourage them to use the **public transport** system

The ARUP logo is located in the bottom right corner of the slide. It consists of the word "ARUP" in a bold, black, serif font. The background of the slide is a light blue color with a faint, circular graphic element that resembles a stylized globe or a large letter 'O'.

Section 1 Context & Background

Progress on Transport Issues

Public transport provision between east & west: Southern orbital in place

Park & Ride: Pouladuff Road becoming more popular

Local Environment for Cyclists & Pedestrians

College Road Scheme

Gaol Walk Proposal

Public Transport & Cycle Routes Generally
Green Routes & Cycle Network Strategy (Cork City Council)



ARUP

Section 2

Proposed Measures



ARUP

Section 2 Proposed Measures

Proposed Possible Measures for UCC

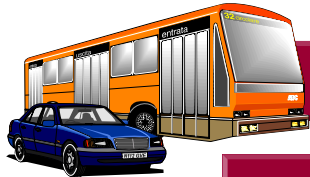


Parking Control.

Car Sharing.



Park and Ride.



Public Transport.



Cycling.



Walking.



Section 2 Proposed Measures

Parking Control

- Clamping of unauthorised parked cars on campus (ongoing)
- Introduction/extension of disc controlled parking on the roads and streets surrounding UCC (by City Council (ongoing))
- Charging for parking at new car parks. (Biosciences and Brookfield)
- Perrott's Inch & Mackesey's Field as visitors / short stay car park
- Possible charging for staff parking



Section 2 Proposed Measures

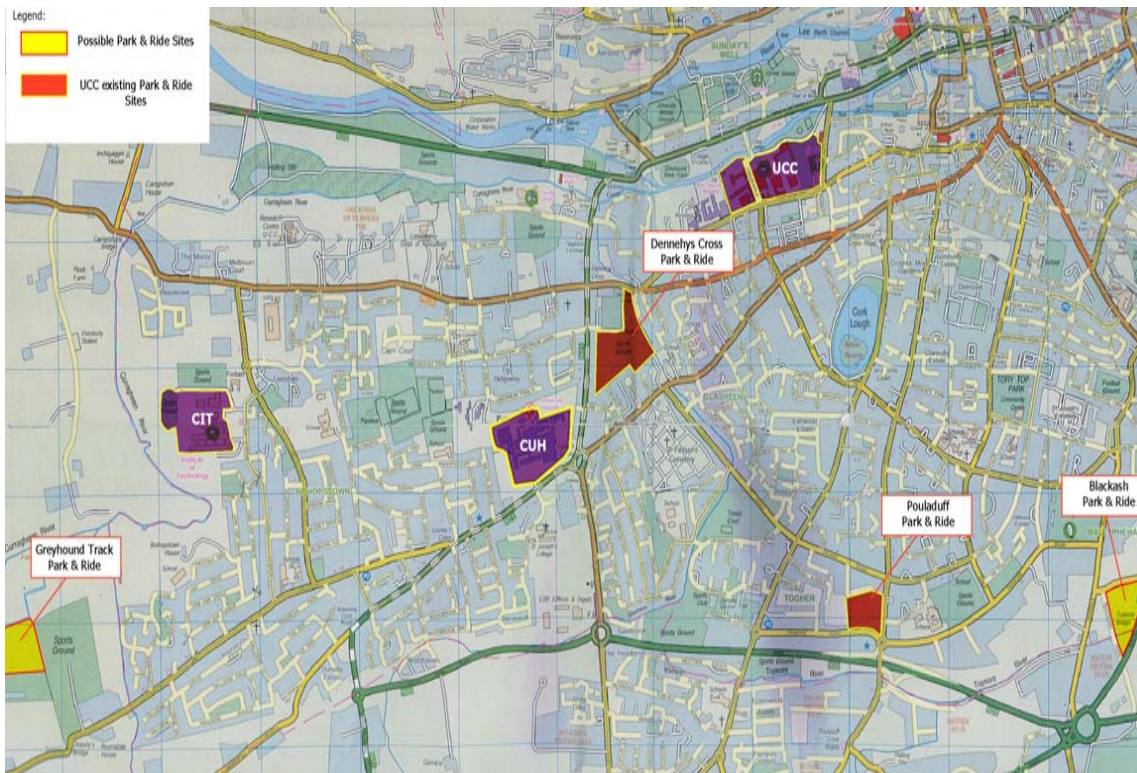
Car sharing



- Expanding the car sharing scheme
- Reserved car parking for car sharers
- Free taxi home in the case of an emergency to continue

Section 2 Proposed Measures

Park and Ride



- **SW Area Park and Ride** Study completed – discussion ongoing
- **Current focus for UCC** Pouladuff Road / Dennehy's Cross
- Future expansion options being considered

Section 2 Proposed Measures

Public Transport



- Employer Pass Scheme to encourage public transport usage.
- Consultation with Bus Eireann about improved services for the campus.
- Green Routes Network being rolled out
- Enhanced Park and Ride on the agenda

ARUP

Section 2 Proposed Measures

Cycling & Walking

- Improved cycle facilities including increased bicycle parking, provision of showers and changing facilities in all new developments, establish a Bicycle Users Group.
- Discount purchase scheme for staff to help towards the cost of a bicycle
- College Road scheme to proceed. Gaol Walk proposals being pursued.
- Cycle Network roll out



ARUP

Section 3

Scenarios being Considered

- Existing Situation
- Scenarios 1 - 3



ARUP

Existing

Pay parking continues at Biosciences and Perrott's Inch.

Continuation of the **Park and Ride** Facilities at Dennehy's Cross and at Pouladuff.

Bus pass scheme has been implemented.

Clamping of unauthorised vehicles in the campus car parks.

Income

Perrott's Inch
Biosciences

Total Income

€70,000

Existing Commuter Plan Expenditure:

Park and Ride at Dennehy's Cross

Bus Service

Security

Land Rental

Park and Ride at Pouladuff

Bus Service

Land Rental

Public Transport

Easi Travel Plan

Total Expenditure

€140,000

Existing

Pay parking continues at Biosciences and Perrott's Inch.

Continuation of the **Park and Ride** Facilities at Dennehy's Cross and at Pouladuff.

Bus pass scheme has been implemented.

Clamping of unauthorised vehicles in the campus car parks.

Advantages



Do-minimum solution

Disadvantages



Cost



Minimal commuter plan measures implemented

Scenario 1

All Existing Measures

Change **Mackesy's Field** to a short stay car park – Charge commercial rates here and at Perrott's Inch.

Continue UCC policy of **charging for new car parks** when Brookfield is complete.

Additional **Park and Ride Bus**

Subsidies for **Car Sharing, Bicycle Users**

Income

Perrott's Inch
Mackesy's Field
Biosciences
Brookfield

Total Income **€290,000**

Commuter Plan Expenditure:

Park and Ride at Dennehy's Cross
Park and Ride at Pouladuff
Public Transport
Other Measures
Parking Equipment

Total Expenditure **€300,000**

Scenario 1

All Existing Measures

Change **Mackesy's Field** to a short stay car park – Charge commercial rates here and at Perrott's Inch.

Continue UCC policy of **charging for new car parks** when Brookfield is complete.

Additional **Park and Ride Bus**

Subsidies for **Car Sharing, Bicycle Users**

Advantages



Implementation of some Commuter Plan measures



Increased income is generated



Improved organisation of the Commuter Plan

Disadvantages



No significant improvement in park and ride capacity



Not all commuter plan measures are implemented

Scenario 2

All Scenario 1 Measures

Full implementation of the Commuter Plan Report including charging for the use of all UCC car parks

Introduction of **subsidised public transport tickets** i.e. UCC will contribute towards the cost of public transport tickets.

Income

Car Park Income (Indicative Hourly rate: 20c)

Total Income €450,000

Commuter Plan Expenditure:

Park and Ride at Dennehy's Cross

Park and Ride at Pouladuff

Public Transport Subsidy (€100k)

Other Measures

Parking Equipment

Total Expenditure €450,000

Scenario 2

All **Scenario 1** Measures

Full implementation of the **Commuter Plan Report** including charging for the use of all UCC car parks

Introduction of **subsidised public transport tickets** i.e. UCC will contribute towards the cost of public transport tickets.

Advantages



Increased income



Improved commuter plan



More choice of travel modes for staff, especially public transport

Disadvantages



No significant improvement in park and ride capacity



Parking demand issues not addressed



Thank You

Partnership Group
Presentation

University College Cork

18 Feb 2004



ARUP